

Cantilever driveway gates are far superior to rolling track systems. The gate never jumps off the track, because there is no track.

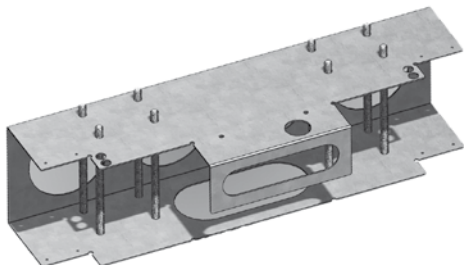
Gate Companies recommend Cantilever gates for their reliability. The gate never touches the ground, and it doesn't have a track that could get damaged or dirty causing the gate to jump off. Even if the driveway has a slope or is uneven in any way the gate stays perfectly level. Always!

Cantilever gates are preferred by architects because they don't need a track across the driveway. The gate doesn't touch the driveway at all.

Users appreciate the smooth super-quiet operation and superior reliability over track systems.

### Slab Models:

Code	Gate
SLAB-R	4m/200kg or 3m/300kg
SLAB-J	4m/120kg or 3m/150kg



The Slab makes cantilever systems possible on projects with a modest budget. The Slab dramatically reduces your installation time and visits to site by acting as a single platform to mount motor and carriage wheels plus strengthens the concrete foundation.

Pour the foundation concrete around our engineered galvanised steel Slab. When the concrete is set just bolt the wheel-carriages and motor down, slide the gate on and the job is done. Perfect gate alignment for the life of the gate.

### Hardware & Automation

Code	Description
CGS-150KIT	BASIC KIT 2x 3m Track or 1x 6m track 2x 5-wheel carriages 1x end cup 1x end wheel
<b>Options</b>	
CG-9728	Top guide with bearing rollers (Flat top gates)
CG-9764	Side guide with bearing rollers (Spear top gates)
<b>Suggested Automation and Access Control</b>	
ASL-700PRO	Automation Kit
ASL-700PROSP	Automation Kit (external transformer)
AR-6FPNRUP	1m Nylon Rack (total m = opening width + 1m extra)
AAC-VIDEOINT	Video Intercom with gate control
AAC-KEYPAD	Hardwired Keypad with decoder

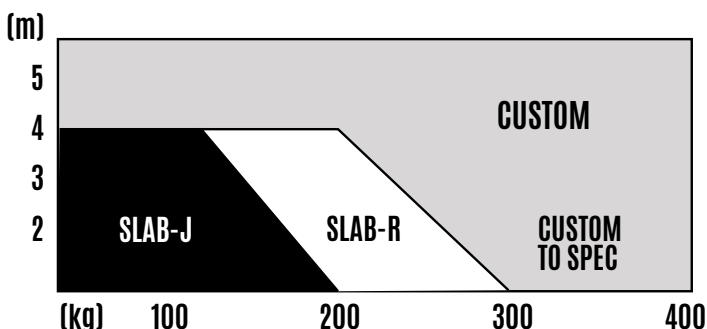
### Gate Design Recommendations

Gate frame size  
Using a bottom tube the same size as the monorail provides a more secure mount for the gear rack. Use 75x75 (3mm thickness) SHS for the bottom of the gate and 75x50 or 50x50 for the top of the gate.

Tail Size  
Gate tail needed for Slab-J is 850mm and for Slab-R it's 1150mm.

### Slab Selector

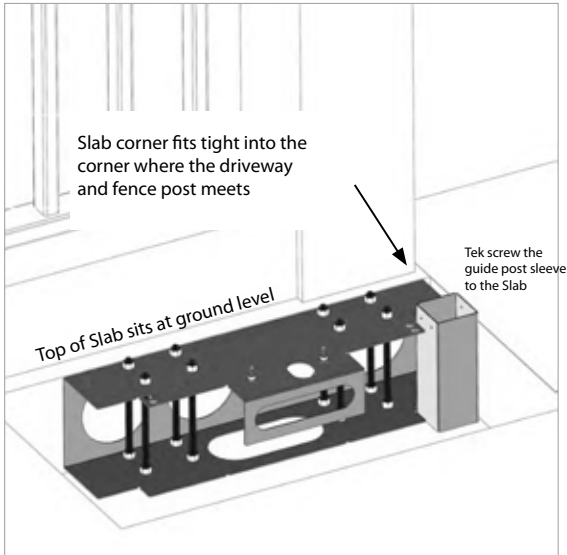
Length = Driveway opening only not the tail  
Weight = Total weight including tail.



# INSTALLATION GUIDE

## ADDITIONAL MATERIALS

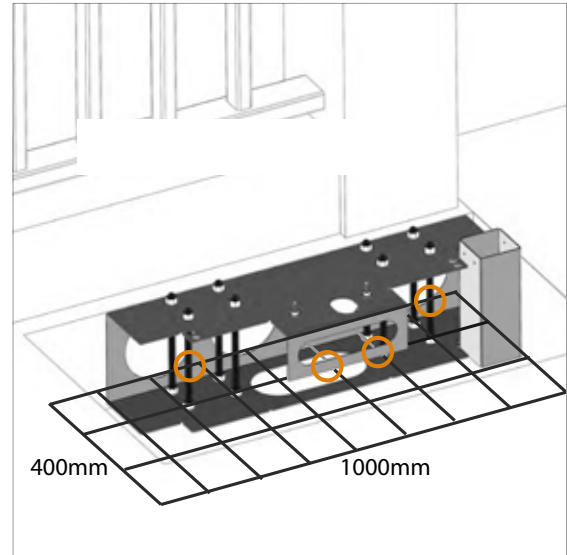
100x100x3 SHS (Gate height + 300mm).  
100x100 post cap  
0.35 m<sup>3</sup> of concrete  
Reo mesh 1000x400



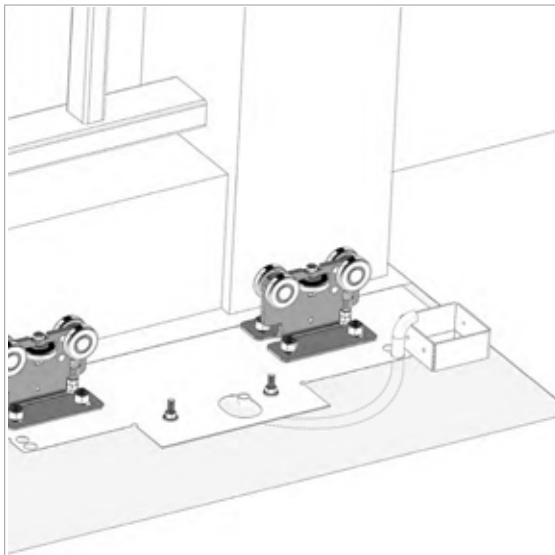
1. - Dig the hole  
- Align and level the slab

Hole size 500wide, 500deep, 1100long (Slab-R) or 1200long (Slab-J)

**IMPORTANT: Make certain Slab is level before and after concrete is poured**

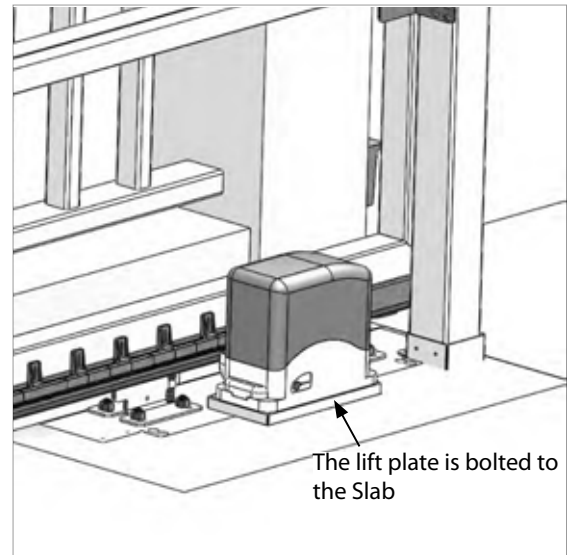


2. Tie the reo to the Slab at the points circled in orange shown above



3. - Place the conduit (optional)  
- Keep the concrete level during the pour  
- Bolt on the carriage wheels after the concrete is dry

**TIP:** Place the electrical conduit before pouring the concrete



4. - Bolt the lift plate to the Slab  
- Bolt the motor to the lift plate  
- Tek screw the 100x100 guide post into the Slab's sleeve  
- Mount suitable guide rollers to the post  
- The gate is now ready to be fitted