

SPEARS

| | |
|--------------------------|-----|
| C - Female | 2 |
| C - Male | 2 |
| G - Female | 2 |
| JN - Female Fleur de lis | 2 |
| J - Female | 3 |
| J - Male | 3 |
| K - Male | 3 |
| L - Female | 3 |
| M - Female | 3 |
| Q - Female | 3 |
| S - Male | 4 |
| T - Female | 4 |
| T - Male | 4-5 |
| U - Female | 5 |
| W - Female | 5 |

PICKET TOPS

| | |
|-------------|---|
| Windsor | 6 |
| Kenilworth | 6 |
| Stonnington | 6 |

RINGS

| | |
|-----------|---|
| Steel | 6 |
| Aluminium | 6 |

DECORATORS

| | |
|-------------------|-----|
| Clip On | 6 |
| Decorators Panels | 6-7 |
| Inserts | 7 |

POST CAPS

| | |
|----------------------|---|
| Ball - Square Tube | 8 |
| Ball - Round Pipe | 8 |
| Decorative Post Caps | 8 |
| Post Caps | 8 |

CORNER FRIEZE

| | |
|-------------|---|
| Westminster | 9 |
| Dorrington | 9 |

DROPPERS

| | |
|-------|---|
| Small | 9 |
|-------|---|

BRACKETS

| | |
|--------|---|
| Jasmin | 9 |
|--------|---|

PANELS- ALUMINIUM

| | |
|-----------------------|----|
| Panels - Double-sided | 10 |
|-----------------------|----|

NEWELS - ALUMINIUM

| | |
|-----------------------|----|
| Newels - Double-sided | 11 |
|-----------------------|----|

* For terms & conditions of sale please read the last page of this catalogue

C-FEMALE - Aluminium



| CODE | TO FIT | SIZE | CTN | KG |
|-------|--------|--------|-----|-----|
| SPC19 | 15.9 Ø | 100x42 | 200 | 10 |
| SPC1 | 16 Ø | 100x42 | 200 | 10 |
| SPC15 | 19 Ø | 100x42 | 200 | 10 |
| SPC31 | 15.9 Ø | 150x62 | 60 | 9 |
| SPC9 | 16 Ø | 150x62 | 60 | 9 |
| SPC33 | 19 Ø | 150x62 | 60 | 8.5 |

C - MALE - Aluminium



| CODE | TO FIT | SIZE | CTN | KG |
|--------|--------|--------|-----|----|
| CAM108 | 19 Ø | 173x65 | 60 | 8 |

*Some sizes/types made to order, minimum quantities apply.

G - Female



| CODE | TO FIT | SIZE | CTN | KG |
|-------|--------|--------|-----|-----|
| SPG19 | 15.9 Ø | 100x47 | 200 | 9.5 |
| SPG1 | 16 Ø | 100x47 | 200 | 9.5 |
| SPG15 | 19 Ø | 100x47 | 200 | 9.5 |

JN - Female Fleur de lis



| CODE | TO FIT | SIZE | CTN | KG |
|--------|--------|--------|-----|----|
| SPJN19 | 15.9 Ø | 100x68 | 125 | 10 |
| SPJN1 | 16 Ø | 100x68 | 125 | 10 |
| SPJN15 | 19 Ø | 100x68 | 125 | 10 |

J - FEMALE - Fleur de lis



| CODE | TO FIT | SIZE | CTN | KG |
|-------|--------|--------|-----|-----|
| SPJ2 | 12 Ø | 100x68 | 125 | 11 |
| SPJ19 | 15.9 Ø | 100X68 | 125 | 11 |
| SPJ1 | 16 Ø | 100X68 | 125 | 8.5 |
| SPJ15 | 19 Ø | 100X68 | 125 | 9 |

J - MALE - Fleur de lis



| CODE | TO FIT | SIZE | CTN | KG |
|-------|------------------------|--------|-----|----|
| SPJ13 | 15.9 Øx1.2 16 Øx1.2 | 100x68 | 125 | 10 |
| SPJ7 | 19 Øx1.2 | 100x68 | 125 | 9 |

K - MALE - Cardinal



| CODE | TO FIT | SIZE | CTN | KG |
|--------|--------|--------|-----|-----|
| K001K3 | 19 Ø | 110x30 | 100 | 7.5 |

*Some sizes/types made to order, minimum quantities apply.

L - FEMALE



| CODE | TO FIT | SIZE | CTN | KG |
|-------|--------|-------|-----|----|
| SPL19 | 15.9 Ø | 55x32 | 250 | 13 |
| SPL1 | 16 Ø | 55x32 | 250 | 13 |
| SPL15 | 19 Ø | 55x32 | 250 | 13 |

M - FEMALE



| CODE | TO FIT | SIZE | CTN | KG |
|-------|--------|--------|-----|----|
| SPM83 | 19 Ø | 170x98 | 40 | 1 |

Q - FEMALE - Cardinal



| CODE | TO FIT | SIZE | CTN | KG |
|-------|--------|--------|-----|----|
| SPQ19 | 15.9 Ø | 110x30 | 100 | 9 |
| SPQ1 | 16 Ø | 110x30 | 100 | 9 |
| SPQ15 | 19 Ø | 110x30 | 100 | 9 |
| SPQ21 | 19 SQ | 110x30 | 100 | 9 |

*Some sizes/types made to order, minimum quantities apply.

S - MALE



| CODE | TO FIT | SIZE | CTN | KG |
|-------|-------------|-------|-----|------|
| SPS13 | 15.9 Øx1.2 | 89x45 | 150 | 9 |
| | 16 Øx1.2 | | | |
| SPS7 | 19 Øx1.2 | 89x45 | 150 | 9 |
| SPS17 | 19 SQx1.2 | 89x45 | 150 | 9.5 |
| | 20 SQx1.6 | | | |
| SPS40 | 25.4 SQx1.2 | 89x45 | 150 | 11 |
| SPS43 | 25.4 SQx1.6 | 89x45 | 150 | 10.5 |

T - FEMALE



| CODE | TO FIT | SIZE | CTN | KG |
|-------|--------|--------|-----|------|
| SPT31 | 15.9 Ø | 150x38 | 80 | 10.5 |
| SPT9 | 16 Ø | 150x38 | 80 | 10.5 |
| SPT33 | 19 Ø | 150x38 | 80 | 10 |
| SPT8 | 20 Ø | 150x38 | 80 | 10 |

T - MALE



| CODE | TO FIT | SIZE | CTN | KG |
|------|--------|--------|-----|------|
| SPT1 | 16 Ø | 100x28 | 150 | 10.5 |
| SPT2 | 19 Ø | 100x28 | 150 | 10.5 |

*Some sizes/types made to order, minimum quantities apply.

T - MALE



| CODE | TO FIT | SIZE | CTN | KG |
|-------|------------------------|--------|-----|------|
| SPT13 | 15.9 Øx1.2 16 Øx1.2 | 110x28 | 220 | 11.5 |
| SPT7 | 19 Øx1.2 | 110x28 | 220 | 11.5 |
| SPT17 | 19 SQx1.2 20 SQx1.6 | 110x28 | 220 | 12.5 |
| SPT36 | 15.9 Øx1.2 16 Øx1.2 | 150x38 | 80 | 10 |
| SPT38 | 19 Øx1.2 | 150x38 | 80 | 10 |
| SPT41 | 25.4 SQx1.2 | 150x38 | 80 | |
| SPT37 | 19 SQx1.2 20 SQx1.6 | 150x38 | 80 | 10 |
| SPT42 | 25.4 SQx1.6 | 150x38 | 80 | 10 |
| SPT43 | 25.4 SQx1.2 | 150x38 | 80 | 10.5 |

U - FEMALE



| CODE | TO FIT | SIZE | CTN | KG |
|-------|--------|--------|-----|----|
| SPU9 | 16 Ø | 150x65 | 60 | 9 |
| SPU33 | 19 Ø | 150x65 | 60 | 9 |

W - FEMALE



| CODE | TO FIT | SIZE | CTN | KG |
|-------|--------|--------|-----|-----|
| SPW9 | 16 Ø | 150x62 | 60 | 7.3 |
| SPW33 | 19 Ø | 150x62 | 60 | 7 |

*Some sizes/types made to order, minimum quantities apply.

WINDSOR - Aluminium



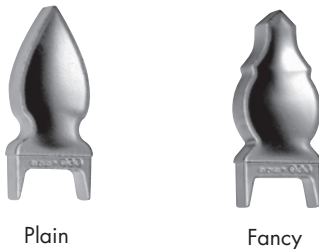
| CODE | TYPE | SIZE | TO FIT | CTN | KG |
|--------|---------|--------|-----------|-----|----|
| PITWIN | Windsor | 100x55 | 75x16x0.9 | 60 | 9 |

KENILWORTH - Aluminium



| CODE | TYPE | SIZE | TO FIT | CTN | KG |
|-----------|-------------|--------|-----------|-----|----|
| PITFLAT | Low Profile | 50x5 | 50x10x0.9 | 400 | 7 |
| PITKENISR | Round | 50xR25 | 50x10x0.9 | 350 | 13 |

STONNINGTON - Aluminium



Plain

Fancy

| CODE | TYPE | SIZE | TO FIT | CTN | KG |
|--|-------|--------|-----------|-----|------|
| Stonnington Small | | | | | |
| PITSTONSP | Plain | 115x50 | 50x10x0.9 | 150 | 11 |
| PITSTONSF | Fancy | 115x50 | 50x10x0.9 | 150 | 11 |
| Stonnington Large - For use with aluminium tube | | | | | |
| PITSTONLP | Plain | 140x65 | 65x16x1.2 | 60 | 11 |
| PITSTONLF | Fancy | 140x65 | 65x16x1.2 | 60 | 11.5 |

RINGS



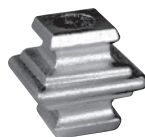
| CODE | SIZE | MTRL | FINISH | PACK | KG |
|-----------|-------|-----------|-----------------|------|----|
| FPRZ78-8 | 78x8 | Steel | Zinc/Gold Pass. | 100 | 9 |
| FPRZ82-8 | 82x8 | Steel | Zinc/Gold Pass. | 100 | 9 |
| FPRZ90-8 | 90x8 | Steel | Zinc/Gold Pass. | 100 | 10 |
| FPRZ90-10 | 90x10 | Steel | Zinc/Gold Pass. | 100 | 15 |
| FPRZ100-8 | 100x8 | Steel | Zinc/Gold Pass. | 100 | 11 |
| FPPA78-8 | 78x8 | Aluminium | Mill | 100 | 3 |
| FPPA90-8 | 90x8 | Aluminium | Mill | 100 | 4 |

CLIP ONS - Aluminium



| CODE | DESCRIPTION | CTN | SIZE | KG |
|--------------|-------------|------|-----------|------|
| CO-SANTA-ANA | Santa Ana | EACH | 390x170mm | 0.35 |

DECORATORS - Aluminium

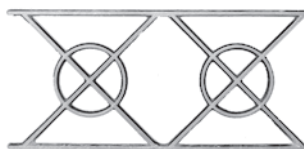


| CODE | SIZE | TO FIT | CTN | KG |
|------------|---------|--------|-----|----|
| FENDECS-16 | 45x45mm | 16.0 | 125 | 6 |

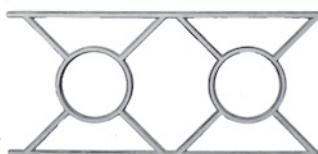
DECORATORS PANELS - Aluminium



Double V Panel



Panel Cross



Panel Circle

| CODE | SIZE | KG | |
|-----------------------|---------|------|-------|
| Double V Panel | | | |
| DPDVA | 671x120 | EACH | 0.480 |
| Panel Cross | | | |
| DPXA | 410x190 | EACH | 0.650 |
| Panel Circle | | | |
| DPCA | 410x190 | EACH | 0.570 |

INSERTS - Aluminium



| CODE | | FINISH | PACK | KG |
|---|-----------|-------------|------|-----|
| CROSSES | | | | |
| 2 Part Interlocking - 16x5 Solid Bar - 120x120 | | | | |
| DFCZ | Steel | Zinc Plated | 100 | .10 |
| DFCA | Aluminium | Mill | 100 | .10 |
| DIAMOND | | | | |
| 2 Part - 16x5 Solid Bar - 70x70 | | | | |
| DFDZ | Steel | Zinc Plated | 100 | 1 |
| STAR | | | | |
| Die Casting - 120x120mm | | | | |
| DFSA | Aluminium | Mill | 100 | .13 |

BALL - SQUARE TUBE - Aluminium



Square Tube Female



Square Tube Male

*Available in 50mm only

| CODE | SIZE | TO FIT | KG |
|-----------------------------|------------|--------------------------|--------|
| Square Tube - Female | | | |
| PT50F* | 95Hx50 Ø | 50 SQ | 0.250 |
| Square Tube - Male | | | |
| PT50M | 105Hx53 Ø | 50 SQx1.6 50.8 SQx2.0 | 0.300 |
| PT65M | 115Hx65 Ø | 65 SQx1.6-2.5 | 0.30.7 |
| PT75M | 125Hx75 Ø | 75 SQx2.3-4.0 | 0.329 |
| PT100M | 165Hx100 Ø | 100 SQx2.5-4.0 | 0.578 |

BALL - ROUND PIPE - Aluminium



Galtube Plus



Galvanised Pipe

| CODE | SIZE | TO FIT | KG |
|-------------------------------|------------|--------|-------|
| Galvanised Pipe - Male | | | |
| PT50NBM | 115Hx65 Ø | 50NB | 0.190 |
| PT90NBM | 170Hx90 Ø | 90NB | 0.850 |
| PT100NBM | 195Hx105 Ø | 100NB | 0.480 |

DECORATIVE POST CAPS - Aluminium



Victorian



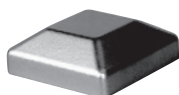
Victorian Spear



Spear to Post Cap
Fixing kit

| CODE | SIZE | TO FIT | KG |
|---|------------------------------|--------|-------|
| Victorian Post Cap | | | |
| PTVPC125 | Male (290 High) | 125 SQ | 2 |
| PTVPC100 | Male (230 High) | 100 SQ | 2 |
| Victorian Spear Kit - Spear (150 High) + Stud + Nut (Cap not included) | | | |
| PTVICSP | Cap with min. 44 Ø Flat area | | 0.368 |
| Female Spear To Post Cap Fixing Kits - Spear + Cap not included | | | |
| PTPCFK15.9-16.0 | Suit 15.0-16.0 Spears | | |
| PTPCFK19R | Suit 19.0 Spears | | |

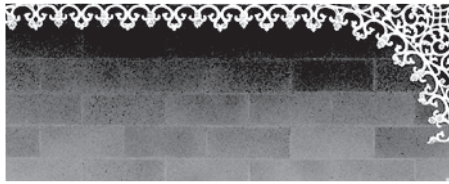
POST CAPS - Aluminium



"A" Spear attached to Post Cap
using Fixing Kit. See above.

| CODE | TYPE | TO FIT | PACK | KG |
|------|---------|--------|------|----|
| PC5 | Profile | 50x50 | 150 | 5 |
| PC6 | Profile | 65x65 | 100 | 5 |

CORNER FRIEZE - Aluminium



- Westminster Corner & Frieze include cast-in fixing slots.
- Dorrington Corner & Frieze include cast-in fixing slots.

| CODE | TYPE | SIZE | PACK | FINISH | KG |
|--------------------|--------|---------|------|--------|-------|
| Westminster | | | | | |
| CORWESM | Corner | 400x400 | 15 | Mill | 0.546 |
| CORWES# | | | | P/Coat | |
| FRIWESM | Frieze | 800x75 | 15 | Mill | 0.405 |
| FRIWES# | | | | P/Coat | |
| Dorrington | | | | | |
| CORDORM | Corner | 400x450 | 10 | Mill | 1.07 |
| CORDOR# | | | | P/Coat | |
| FRIDORM | Frieze | 800x135 | 10 | Mill | 1.015 |
| FRIDOR# | | | | P/Coat | |

Add Powercoat Code to Product Code: M=Mill, W=White, C=Cream, G=Green.

DROPPERS - Aluminium



Small

| CODE | TYPE | SIZE | FINISH | KG |
|---|---------------|--------|--------|-------|
| Suits Westminster & Dorrington | | | | |
| FDRSM | Small Dropper | 220x50 | Mill | 0.132 |
| FDRS# | | | P/Coat | |

Add Powercoat Code to Product Code: M=Mill, W=White, C=Cream, G=Green.

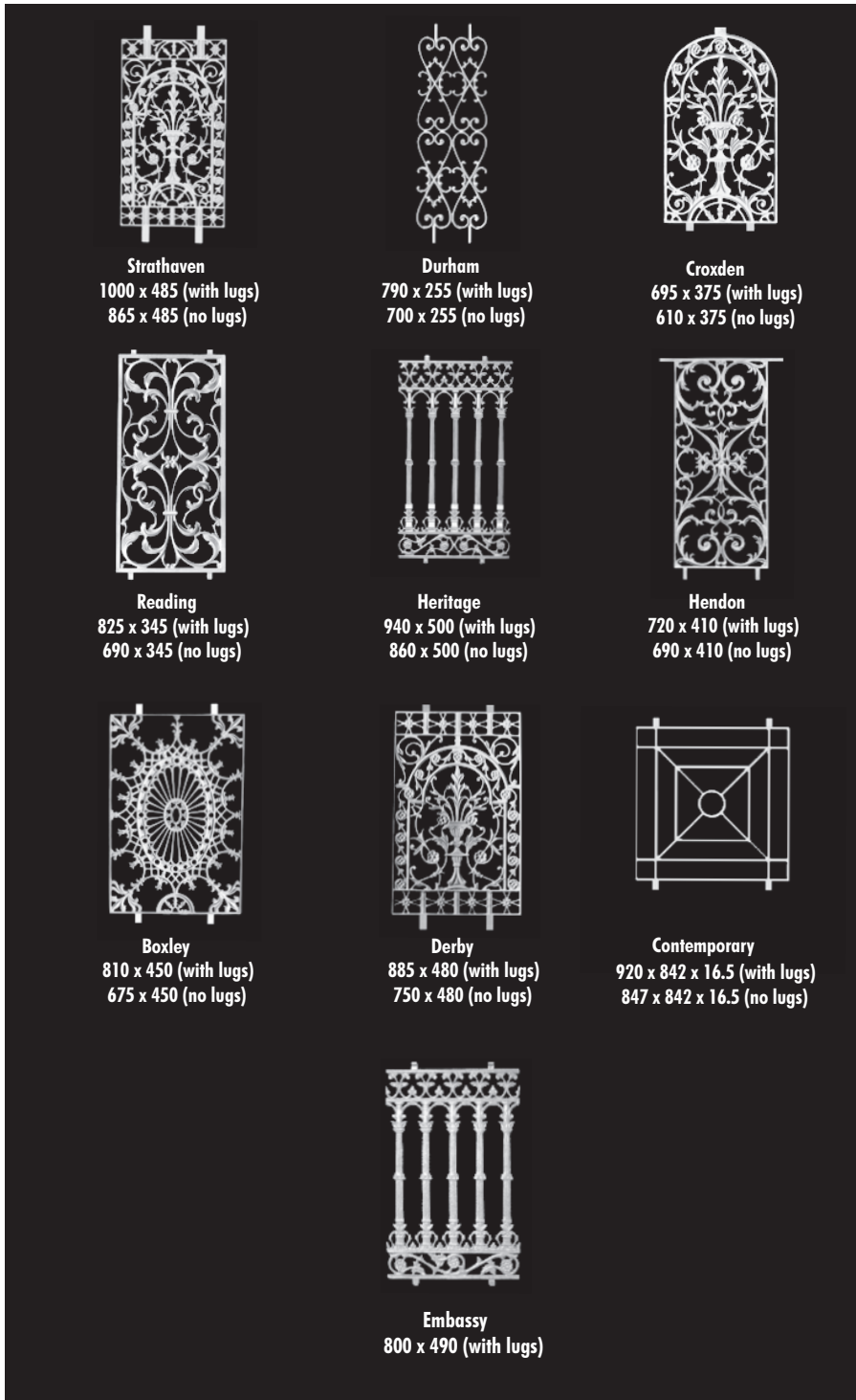
BRACKETS - Aluminium



| CODE | FINISH | KG |
|---------------|--------|------|
| Jasmin | | |
| BRAJASM | Mill | 0.62 |
| BRAJAS# | P/Coat | |

Add Powercoat Code to Product Code: M=Mill, W=White, C=Cream, G=Green.

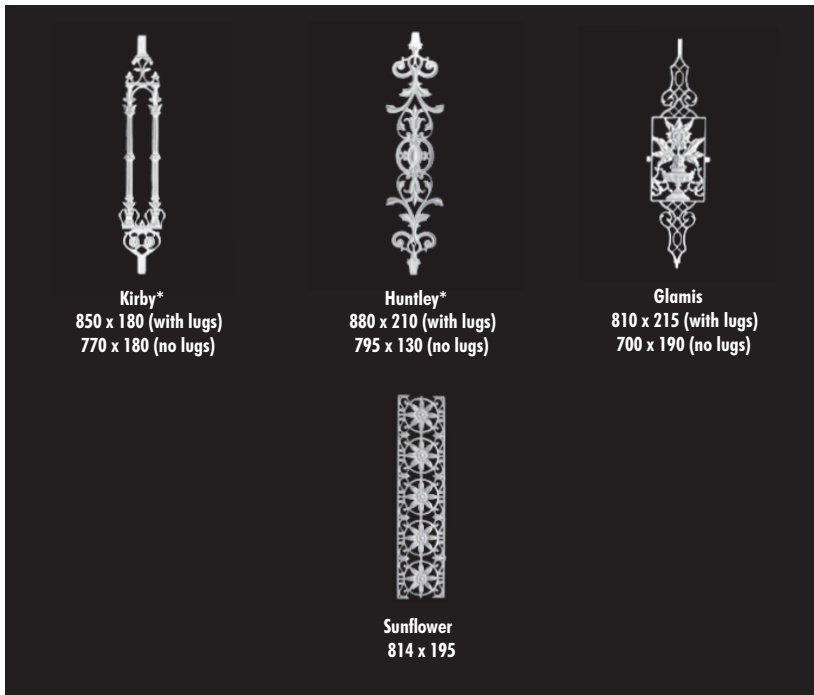
PANELS - Double Sided



| CODE | FINISH | KG |
|---------------------|--------|------|
| Strathaven | | |
| PANSTRM | Mill | 3.50 |
| PANSTR# | P/Coat | |
| Durham | | |
| PANDURM | Mill | 1.00 |
| PANDUR# | P/Coat | |
| Croxden | | |
| PANCROM | Mill | 2.38 |
| PANCRO# | P/Coat | |
| Reading | | |
| PANREAM | Mill | 2.16 |
| PANREA# | P/Coat | |
| Heritage | | |
| PANHERM | Mill | 3.52 |
| PANHER# | P/Coat | |
| Hendon | | |
| PANHENM | Mill | 2.24 |
| PANHEN# | P/Coat | |
| Boxley | | |
| PANBOXM | Mill | 3.20 |
| PANBOX# | P/Coat | |
| Derby | | |
| PANDERM | Mill | 3.40 |
| PANDER# | P/Coat | |
| Contemporary | | |
| PANCONM | Mill | 4.6 |
| PANCON | P/Coat | |
| Embassy | | |
| PANEMB# | Mill | 3.20 |
| PANEMB# | P/Coat | |

Add Powercoat Code to Product Code:
M=Mill, W=White, C=Cream, G=Green.

NEWELS - Double Sided



| CODE | FINISH | KG |
|------------------|--------|------|
| Kirby | | |
| NEWKIRM | Mill | 1.34 |
| NEWKIR# | P/Coat | |
| Huntley | | |
| NEWHUNM | Mill | 1.61 |
| NEWHUN# | P/Coat | |
| Glamis | | |
| NEWGLAM | Mill | 1.18 |
| NEWGLA# | P/Coat | |
| Sunflower | | |
| NEWSUNM | Mill | 2.06 |
| NEW SUN# | P/Coat | |

Add Powercoat Code to Product Code:
M=Mill, W=White, C=Cream, G=Green.

DEFINITIONS

In these terms and conditions of sale (Terms and Conditions): (a) "RMD" means RMD Industries® Pty Ltd (ABN 31 004 313 937) of 6-10 Market Road, Sunshine, Victoria and all business units and divisions. (b) "GST" means GST as defined in the GST Act. (c) "GST Act" means A New Tax System (Goods and Services Tax) Act 1999 (Cth). (d) "Impost" means any royalty, tax (including GST), duty, excise, levy, fee, rate or charge imposed by any governmental or semi-governmental or other body authorised by law which is imposed on or in respect of or in relation to the provision, sale or supply of the Goods by RMD. (e) "Purchaser" means any persons, companies or entities who: (i) is the other party to a contract for manufacture, sale or supply of goods; (ii) is named in or receives a quotation or sales invoice for the manufacture or sale of goods or the provision of services by RMD; (iii) Purchases goods from RMD; or (iv) Requests RMD to provide designs or specifications or manufacturing proposals for the manufacture of a product.

GENERAL

(a) These Terms and Conditions apply in respect of all offers to sell, quotations made, contracts secured and other commercial transactions for the supply of goods and services (Goods) by RMD. (b) These Terms and Conditions shall coexist with and be read in conjunction with any other conditions of sale (Special Conditions) agreed in writing between RMD and the Purchaser. The Special Conditions will prevail to the extent of any inconsistency with these Terms and Conditions. Subject to any Special Conditions, these Terms and Conditions together with a designated written quotation from RMD shall comprise in entirety the terms and conditions of the contract (Contract) entered into between RMD and the Purchaser and all other terms, conditions, warranties, undertakings, inducements and representations, whether express or implied, statutory or otherwise, relating in any way to any Goods, are excluded or limited to the maximum extent permitted by law. (c) Except as otherwise expressly agreed upon in writing between the parties, these Terms and Conditions and any Special Conditions shall apply notwithstanding any provisions to the contrary which may appear on the order form or other documents issued by the Purchaser. (d) The Purchaser acknowledges and agrees to these Terms and Conditions upon making a product inquiry and upon placement of an order for supply and upon acceptance of the credit granted for payment purposes and upon acceptance of the Goods supplied and also upon receipt of the invoice. Each stage is a specific separate acceptance by the Purchaser of these Terms and Conditions.

ALTERATIONS AND OTHER AGREEMENTS

(a) RMD reserves the right to formally change the Terms and Conditions from time to time. Such change shall be by way of provision of at least 30 days written notice to the Purchaser. (b) The Purchaser acknowledges and agrees that no verbal agreement between it and any employee, servant or agent of RMD will be binding on RMD.

QUOTATIONS/ORDERS

(a) All quotations or submissions made or provided by RMD, whether in response to an invitation to tender or otherwise, are deemed to be invitations to treat and shall not constitute a contractual offer. (b) Unless previously withdrawn a quotation is valid for thirty (30) days or such other period as is stated therein and is subject to withdrawal or change at any time until the Purchaser's order has been received and accepted by RMD. The Purchaser's acceptance of a quotation made or provided by RMD is deemed to be an offer and only gives rise to contractual obligations when RMD subsequently confirms in writing acceptance of the offer. (c) RMD shall not be bound by any conditions attaching to the Purchaser's order or acceptance of the quotation, unless RMD in writing accepts such conditions. If the Purchaser accepts the quotation by delivery of an order form or document, which stipulates or purports to impose conditions, such conditions shall not be applicable to the contract resulting from the quotation without such written acceptance by RMD.

EQUIPMENT

All tools, dies and associated equipment which RMD utilises to produce the Goods, shall, unless otherwise expressly agreed by RMD, be and remain the property of RMD and any payment made with respect to them shall be deemed to be charged in respect of their use.

PURCHASER'S MATERIALS

If RMD is required to process the Purchaser's goods or materials then RMD does not give any warranty or assurance that materials supplied by the Purchaser are suitable for such processing and RMD accepts no responsibility and shall not, in any way be liable to the Purchaser for any damage done or caused to such materials or goods.

TERMS OF PAYMENT AND PRICES

(a) Terms will be Net Cash within 30 days from the end of the month in which the Goods supplied were invoiced and the Purchaser will have no right of set off in respect of any claim against RMD. (b) Any price list published by RMD may be changed or altered by RMD at any time without notice to the Purchaser and thereafter RMD shall not be bound by the price list so altered. A price list published by RMD does not amount to an offer to sell the Goods therein mentioned. (c) If the Purchaser fails to pay any amount owing to RMD by the due date, RMD reserves the right to apply interest on that amount at the rate of 2% above the rate fixed under section 2 of the Penalty Interest Rates Act 1983 (Vic), from the date the amount should have been paid until the date the amount is paid. Interest accrues daily, may be capitalised and is payable on demand. (d) Upon request by RMD, the Purchaser must make all payments owed to RMD by means of direct debit into a bank account nominated by RMD and must: (i) nominate in writing to RMD a bank account from which RMD will direct debit the payments; and (ii) sign all necessary forms and consents permitting the direct debit of funds from the bank account in the manner and on the dates specified by RMD. (e) All prices are those current at the date of offer and as stated in the quotation, subject only to any variation clauses contained therein and to paragraph (d) hereof. (f) RMD reserves the right to increase prices to take account of any cost escalation between the time of order and delivery of the Goods.

GST AND IMPOSTS

All prices and amounts payable, or the value of other consideration provided in Conditions of Goods supplied in accordance with these Terms and Conditions are exclusive of GST or any other impost. If a GST or other impost is levied or imposed on any supply made (or deemed to have been made) under or in accordance with these Terms and

Conditions, the recipient must, subject to the receipt of a valid tax invoice from the supplier, pay to the supplier an additional amount equal to the GST or impost payable by the supplier in respect of that taxable supply. All GST or impost amounts payable shall be payable at the time any payment to which it or they relate is payable.

DIMENSIONS AND SPECIFICATIONS

Unless otherwise stated all specifications, drawings and particulars of weights, dimensions and performance characteristics submitted are approximate only. Descriptions and illustrations contained in catalogues, price lists and other written material are intended merely to present a general idea of the Goods described therein and none of these shall form part of the contract.

DELIVERIES

(a) Any delivery dates and/or times quoted are given in good faith but unless otherwise stated RMD will not be held responsible for any delay arising from causes beyond its reasonable control. The Purchaser's receipt of Goods shall constitute a waiver of any claim for delay. (b) Subject as hereinafter provided, the Supplier shall have no liability whatsoever for any direct, indirect or consequential damage or loss arising from non-delivery or any delays in delivery including off loading or misdirection in transit or when the Goods are carried in the Supplier's own vehicles or in Contractors vehicles retained to deliver such Goods. (c) All prices for Goods are quoted on an F.O.B. basis unless otherwise agreed in writing by RMD.

OTHER SUPPLIERS

It is contemplated by both RMD and the Purchaser that to satisfy a contract in whole or part, RMD may manufacture the Goods or may purchase the Goods outright or may order their manufacture or may purchase the rights to manufacture the Goods from a third party.

WARRANTIES

(a) The Purchaser shall immediately notify RMD in writing upon discovery of any defect in the Goods. The Purchaser shall not carry out any remedial work to alleged defective Goods without first obtaining the written consent of the Supplier so to do. (b) The only conditions and warranties which are binding on RMD in respect of the state, quality or condition of the Goods supplied by it to the Purchaser are those imposed and required to be binding by statute (including the Trade Practices Act 1974 and the Fair Trading Act 1989 and any enactment or reenactment thereof) and to the extent permitted thereby, the liability, if any, of RMD arising from the breach of such conditions or warranties shall at RMD's option be limited to and completely discharged by - (i) Any remedy provided by such statute, or (ii) The replacement of the Goods or re-supply of same by RMD, or (iii) The repair of the Goods, or (iv) The payment of the cost of replacement of the Goods, or (v) The payment of the cost or repair of the Goods and otherwise all other conditions and warranties whether express or implied by law in respect of the state, quality or condition of the said Goods which may apart from this clause be binding upon the Supplier are hereby expressly excluded and negated. (c) The Purchaser expressly acknowledges and agrees that RMD is not liable for any advice given by RMD's agents or employees in relation to the suitability for any purpose of Goods or materials supplied by the Supplier and all such advice relied upon is at the Purchaser's risk.

ACCEPTANCE, CLAIMS, RETURNS AND SURCHARGES

(a) The Purchaser shall be deemed to have accepted the Goods to be of the description, quality and quantity ordered unless particulars of any claim are notified to RMD in writing within 7 days after arrival of Goods at the place of delivery, except claims for non delivery which must be made in writing within 14 days from the date of invoice. (b) RMD will not accept return of Goods unless such return is authorised by RMD and the Goods have appropriate documentation stating reasons for the claim referring to the Official Invoice Number and date. A Restocking fee of 15% may be charged to the Purchaser where applicable. (c) Non standard products or Products specially purchased, manufactured, machined or cut to size or to Purchaser's specifications, are not returnable. (d) A surcharge of 15% (or \$15) may apply for broken cartons or packs. (e) A minimum Invoice value of \$200 applies unless otherwise agreed in writing. (f) A surcharge may also apply for delivery of Sliding Door Tracks, if RMD's nominated transport contractor imposes a surcharge on them, to cover the cost of using a semi-trailer rather than a standard flat top for city and suburban deliveries. (g) Where the Purchaser returns Goods of his own volition, RMD will not accept freight charges unless authorised by RMD.

LIABILITY

(a) Except as provided by the proceeding clauses, the Supplier shall not be under any liability, whether in contract, tort (including negligence) or otherwise in respect of defects in Goods delivered or for any injury, damage or loss resulting from such a defect or from any work done in connection therewith except to the extent that any statute applicable to these conditions prevents the exclusion, restriction or modification of such conditions or warranties. (b) To the extent permitted by law and notwithstanding any other provision of the Contract RMD shall not be liable to the Purchaser for any loss of profit or of contract whatsoever arising nor shall the Supplier be under any liability whether in contract, tort (including negligence), for breach of any statutory duty or otherwise nor for any injury, damage or loss whether indirect, consequential, special or otherwise save as is expressly provided in these Terms and Conditions.

EXPORTS

Unless otherwise agreed in writing all exports shall be sold on the basis of F.O.B. Melbourne. Payment by the Purchaser will be prior to dispatch ex RMD's works. Any special packing etc. requirements will be to the Purchaser's account. **RISK/PROPERTY** (a) Risk in the Goods passes to the Purchaser immediately upon delivery. The point of delivery is as shown in the body of any quotation, invoice or delivery docket and if not shown therein shall, subject to any other agreement between the Purchaser and RMD evidenced by any document in writing, be at RMD's store. (b) Unless RMD shall otherwise specify in writing all Goods sold by RMD to the Purchaser shall be and remain the property of RMD until the Purchaser has paid all that is owing to RMD. (c) Until the date of payment the Purchaser is required to store the said Goods in good condition and in such a way that it is clearly the property of RMD. (d) Should the Purchaser default in payment RMD may enter the Purchaser's premises and retake possession of and permanently retain any Goods for which full payment has not been received by RMD and revoke all liability of the Purchaser on the contract of sale and delivery of such Goods. (e) Property in the Goods, whether or not joined with

other Goods or into an end product in any manner, shall not pass until RMD has received full payment from the Purchaser for all monies due. (f) In the event of resale of the Goods, including any mixed Goods, by the Purchaser to a third person, all Goods are sold as agents of RMD and the Purchaser shall account to RMD for any money received.

RIGHT OF REMOVAL

The Purchaser irrevocably grants to RMD its agents and servants an unrestricted right and licence, without notice, to enter premises occupied by the Purchaser, to identify and remove any Goods which are the property of RMD, in terms of these conditions as aforesaid without in any way being liable to the Purchaser or any person claiming through the Purchaser, RMD shall have the right to sell or dispose of any of such Goods so removed or otherwise in its sole discretion and shall not be responsible for any loss occasioned thereby.

TERMINATION OF NEGOTIATION OR ORDER

Without prejudice to any other rights RMD may have, the Purchaser shall pay RMD for all costs and expenses incurred and commitments made in connection with the performance of the order or the provision of designs or specifications or proposals plus a reasonable profit thereon, where (a) A Purchaser requests RMD to provide designs or specifications or manufacturing proposals for the manufacture of a product, or (b) Any order resulting from a quotation is terminated for any just cause.

PROGRESSIVE DELIVERY

RMD may deliver any of the Goods progressively and shall then be entitled to payment progressively for the Goods of Goods delivered in such amounts, as RMD shall reasonably determine. If the Purchaser fails to make a progress payment within RMD's normal 30 day trading terms, then RMD shall be entitled to withhold construction or delivery of the remainder of the Goods without incurring liability for such delay.

INTELLECTUAL PROPERTY

(a) All drawings, illustrations, display material, specifications and other literature and materials for or relating to the Goods and whether or not supplied by or on behalf of RMD to the Purchaser, shall remain the exclusive property of RMD and shall not be transferred to any other party without the previous written consent of RMD. The Purchaser shall not use, reproduce or impart any information contained therein to any third party without the previous written consent of RMD except for the purpose of implementing the contract in respect of which they are supplied and except in the case of standard descriptive illustrations, drawings or specifications, they are to be returned to the Seller either on completion of the contract or earlier, at RMD's request. (b) Where RMD has followed a design, sample or instruction furnished or given by the Purchaser, the Purchaser shall indemnify RMD against all damages, penalties, costs and expenses to which it may become liable through any work required to be done in accordance with those instructions involving an infringement of a patent, trademark, registered design, copyright or common law right.

PAYMENTS AND CREDIT INQUIRIES

(a) All quotations and all payments made for Goods must be in Australian currency. (b) Payment for any Goods sold shall become immediately due upon default by the Purchaser in payment for any of the Goods which RMD has sold to the Purchaser and RMD shall be entitled to suspend the supply of further Goods to the Purchaser. (c) The Purchaser hereby gives RMD the authority to make inquiries from credit reporting agencies as to the credit and financial responsibility of the Purchaser and or its partners or Directors as required by RMD from time to time.

ASSIGNMENT

RMD may at any time assign all or any of its rights and obligations under these Terms and Conditions and any Contract without notice to the Purchaser.

APPLICABLE LAW

These Terms and Conditions and any Contract shall in all respects be governed by the laws of Victoria and the parties submit to the non-exclusive jurisdiction of the courts of Victoria and of the Commonwealth of Australia. The application of the Sale of Goods (Vienna Convention) Act 1987 (Vic) or any legislation giving effect to the United Nations Convention on Contracts for the International Sale of Goods in other jurisdictions is excluded.

INTERPRETATION

Any clause headings hereto shall not affect the construction hereof. If any of the provisions of the contract are unlawful or invalid under any applicable statute or rule of law, they are to that extent to be deemed omitted.

SERVICE OF NOTICES

Any notice or document required to be served under these Terms and Conditions or under any Contract entered into between the Purchaser and RMD will be sufficiently served if either left at the address of the respective party as stated in the Contract or as otherwise notified from time to time in writing by that party if it is posted by the pre-paid post to such address. If the document or notice is posted, service will be deemed to have been effected three days after the date on which the document or notice was posted.

DISCLAIMER

(a) All reasonable care has been taken to provide correct and accurate information in all company catalogues, brochures, instruction manuals and advertising material. However, RMD makes no representation and gives no warranty or guarantee that RMD's printed material contains no errors or omissions. RMD excludes all liability that could arise from omissions or unintended inclusion of incorrect information, statements and recommendations in all company written material to the extent permitted by law. (b) The use of products supplied by RMD for any purpose other than those for which they were designed or contrary to instructions or guidelines provided by RMD is not recommended by RMD and such use is strictly at the risk and discretion of the user. (c) All prices and specifications are subject to change without notice.

SPECIFICATIONS SUBJECT TO CHANGE WITHOUT NOTICE